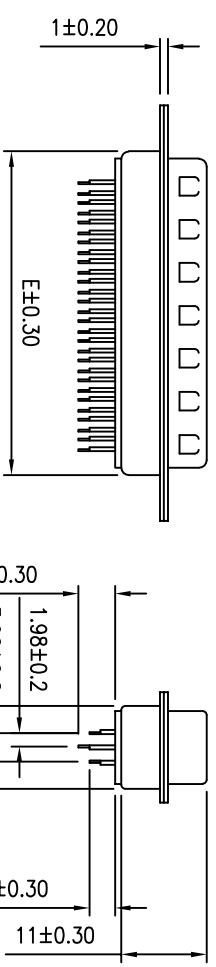
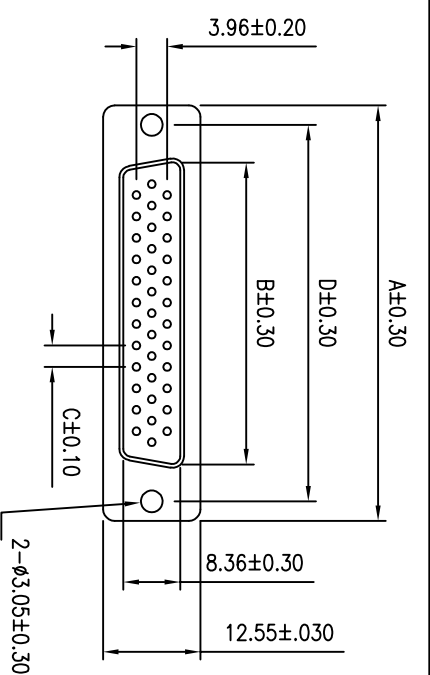


REV	ECN NO.	APP.	DATE
A	NEW DESIGN		

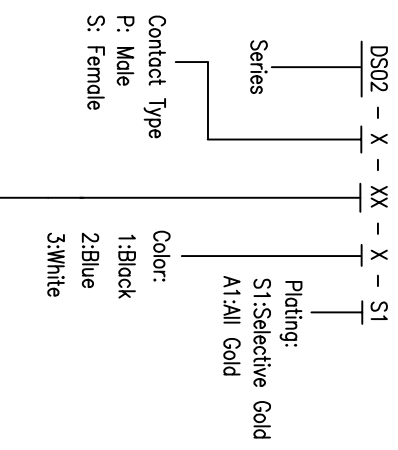
MALE



SPECIFICATION

- * Current Rating: 5 A
- * Withstanding Voltage: 1000 VAC (1 min.)
- * Insulation Resistance: 1000 Megohms MIN.
- * Contact Resistance: 30 Milliohms MAX.
- * Operating Temperature: -40°C to +85°C

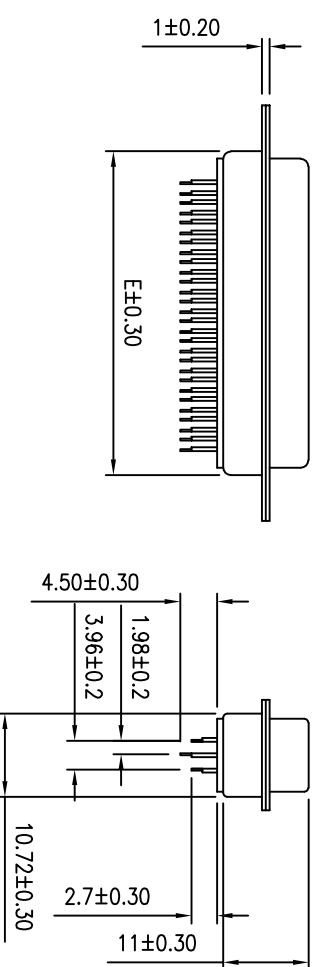
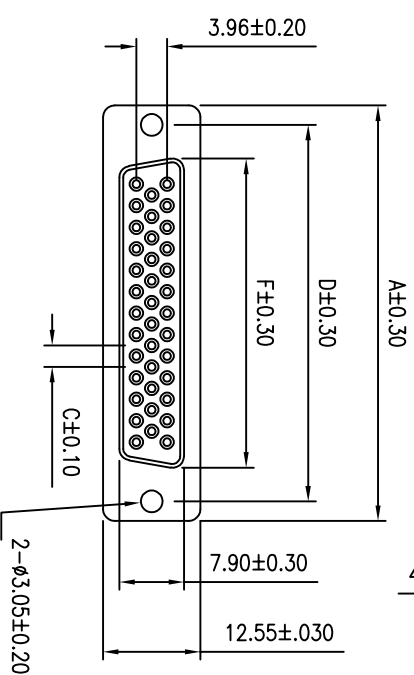
ORDER INFORMATION



MATERIAL

- * Contact: Brass , Selective Gold or All Gold
- * Insulator: PBT & 30% G. F.
- * Shell: Steel , Tin Plated

FEMALE



PART NO.	A	B	C	D	E	F
DS02-X-15-S1	30.80	16.90	2.29	24.99	19.30	16.30
DS02-X-26-S1	39.10	25.30	2.29	33.32	27.50	24.70
DS02-X-44-S1	53.00	39.00	2.29	47.04	41.30	38.40
DS02-X-62-S1	69.30	55.40	2.41	63.50	57.70	54.80
DS02-X-78-S1	66.90	52.86	2.41	61.11	55.30	52.34

SHINHWA TECH CO.,LTD

0.0±	SCALE:	TITLE:	PART NO.:
0.00±	UNIT: MM	D-SUB CONNECTOR	
0.000±		H.D. Solder Type	APP BY:
		MATL: PBT + 30% G.F.	CHK BY:
		DWG. NO. DS02	DR BY: